

# Sanderson



# Sanderson

Contents			
Page 3	<b>The Glasshouse Overview</b>	Page 33	Fenne Weave
Page 4	<b>The Glasshouse Prints Overview</b>	Page 34	<b>The Glasshouse Wallpaper Overview</b>
Page 5-6	Jackfruit	Page 35	Calathea
Page 7-8	Paradesia	Page 36	Fernery
Page 9-10	Palm House	Page 37	Fan Palm
Page 11	Terrariums	Page 38	Palm House
Page 12-13	King Protea	Page 39	King Protea
Page 14	Calethea	Page 40	Yucca
Page 15-16	Fernery	Page 41	Bird of Paradise
Page 17	Ringtailed Lemur	Page 42	Terrariums
Page 18	Tulipomania	Page 43	Hampton Trellis
Page 19	<b>The Glasshouse Weaves Overview</b>	Page 44	Ringtailed Lemur
Page 20	Tree Fern Weave	Page 45	Tulipomania
Page 21	Hampton Weave	Page 46-49	Pricelist
Page 22	Manilla Embroidery	Page 50	Hanger Specifications
Page 23	Rainforest Embroidery	Page 51	Care Code
Page 24	Fernery	Page 52	Suitability and Fire Retardancy Guide
Page 25	<b>Linnean Weaves Overview</b>		
Page 26-27	Linnean Weaves		
Page 28-29	Botanic Trellis		
Page 30	Nelson Weave		
Page 31-32	Hutton Weave		

# Sanderson



Blending the science of flowers and foliage with the beauty of art, The Glasshouse from Sanderson is a celebration of botanical drawing, new for SS19.

Accurately interpreting the exquisite detail of botanical drawing, The Glasshouse from Sanderson is a truly stunning collection of eleven wallpapers, nine prints, two embroideries and three jacquards, each respectfully designed to showcase the undeniable beauty of the natural world

To complement The Glasshouse, the Linnean Weaves book offers stunning colour combinations across a range of elegant designs including versatile geometrics and striking herringbones. Coordinating with The Glasshouse's fabrics and wallpapers, Linnean Weaves are perfect for upholstery and drapes, providing an exciting new addition to the entire Sanderson range.

# Sanderson



## THE GLASSHOUSE PRINTS PRINTS

DESIGNS: 10

Accurately interpreting the exquisite detail of botanical drawings, The Glasshouse from Sanderson is a truly stunning collection of nine prints, two embroideries and three jacquards each respectfully designed to showcase the undeniable beauty of the original plant or flower.

Stunning embroideries sit alongside finely detailed prints as silhouetted shadows and elegant stems bring a subtle movement to the collection. Tropical tones such as Rhodera and Eucalyptus meet with Blush and Aqua as Botanical Green and Lime bring a freshness to the collection.

# Sanderson



Botanical Green  
226559



Tropical/Ink  
226560

## Design Name: Jackfruit

**Design Description:** The jackfruit has an intriguing history, having been one of the main causes of the 'mutiny on the Bounty' in 1789. In this stunning Sanderson design, the stylised jackfruit, surrounded with intricate botanical detail creates a real statement. Printed on either a crisp cotton satin or natural linen quality. Available in four colourways: Botanical Green, Tropical/Ink, Indigo/Rambutan and Fig/Olive

**Width:** 139 cm

**Vertical Pattern Repeat:** 63.50 cm

**Horizontal Pattern Repeat:** 91.50 cm

**Match:** Half Drop

**Composition:** 100% Cotton

**Suitability:** General Dom Upholstery/  
Drapes/Blinds/Cushions

**Treatment Required:** FR19

**Care Instructions:** O

**Weight GSM:** 236

**Threads per Sq cm:** 74

**Average Yarn Number:** 31.3

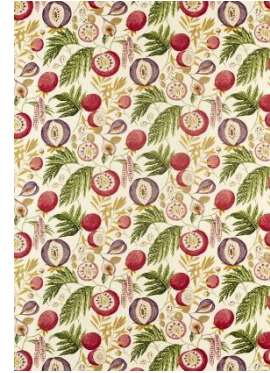
**Martindale:** 20,000

**Tariff Code:** 52095900

# Sanderson



Indigo/Rambutan  
226561



Fig/Olive  
226562

**Design Name:** Jackfruit

**Design Description:** The jackfruit has an intriguing history, having been one of the main causes of the ‘mutiny on the Bounty’ in 1789. In this stunning Sanderson design, the stylised jackfruit, surrounded with intricate botanical detail creates a real statement. Printed on either a crisp cotton satin or natural linen quality. Available in four colourways: Botanical Green, Tropical/Ink, Indigo/Rambutan and Fig/Olive

**Width:** 139 cm

**Vertical Pattern Repeat:** 62.00 cm

**Horizontal Pattern Repeat:** 92.00 cm

**Match:** Half Drop

**Composition:** 90% Cotton 10% Linen

**Suitability:** General Dom Upholstery/  
Drapes/Blinds/Cushions

**Treatment Required:** FR19

**Care Instructions:** O

**Weight GSM:** 252

**Threads per Sq cm:** 38

**Average Yarn Number:** 15.07

**Martindale:** 20,000

**Tariff Code:** 52095900

# Sanderson



Botanical Green  
226563



Orchid/Grey  
226566

**Design Name:** Paradesia

**Design Description:** Combining elements from tropical lands, Paradesia from Sanderson incorporates a carefully selected array of flora and fauna, paired with beautifully illustrated Bird of Paradise motifs. Available in four colourways: Botanical Green, Orange/Olive, Fig/Indigo and Orchid/Grey

**Width:** 139 cm

**Vertical Pattern Repeat:** 91 cm

**Horizontal Pattern Repeat:** 139 cm

**Match:** Straight

**Composition:** 100% Cotton

**Suitability:** General Dom Upholstery/  
Drapes/Blinds/Cushions

**Treatment Required:** FR19

**Care Instructions:** O

**Weight GSM:** 236

**Threads per Sq cm:** 74

**Average Yarn Number:** 31.3

**Martindale:** 20,000

**Tariff Code:** 52095900

# Sanderson



Orange/Olive  
226564



Fig/Indigo  
226565

**Design Name:** Paradesia

**Design Description:** Combining elements from tropical lands, Paradesia from Sanderson incorporates a carefully selected array of flora and fauna, paired with beautifully illustrated Bird of Paradise motifs. Available in four colourways: Botanical Green, Orange/Olive, Fig/Indigo and Orchid/Grey

**Width:** 139 cm

**Vertical Pattern Repeat:** 88 cm

**Horizontal Pattern Repeat:** 139 cm

**Match:** Straight

**Composition:** 90% Cotton 10% Linen

**Suitability:** General Dom Upholstery/  
Drapes/Blinds/Cushions

**Treatment Required:** FR19

**Care Instructions:** O

**Weight GSM:** 252

**Threads per Sq cm:** 38

**Average Yarn Number:** 15.07

**Martindale:** 20,000

**Tariff Code:** 58012700



# Sanderson



Botanical Green  
226567



Eucalyptus  
226569

## Design Name: Palmhouse

**Design Description:** This design's curving foliage makes an oasis of even the most modest interior, with an elegant arrangement of palm leaves and silhouetted shadows in an array of exuberant colours. The naturalistic Botanical Green and deep Eucalyptus are printed on an unbleached linen union, with the opulent Ink on a crisp cotton satin. Available in three colourways: Ink/Teal, Eucalyptus and Bottle Green all of which are suitable for upholstery.

**Width:** 140 cm

**Vertical Pattern Repeat:** 77 cm

**Horizontal Pattern Repeat:** 69 cm

**Match:** Straight

**Composition:** 90% Cotton 10% Linen

**Suitability:** General Dom Upholstery/  
Drapes/Blinds/Cushions

**Treatment Required:** FR19

**Care Instructions:** O

**Weight GSM:** 252

**Threads per Sq cm:** 38

**Average Yarn Number:** 15.07

**Martindale:** 20,000

**Tariff Code:** 53092900

# Sanderson



Ink/Teal  
226568

**Design Name:** Palmhouse

**Design Description:** This design's curving foliage makes an oasis of even the most modest interior, with an elegant arrangement of palm leaves and silhouetted shadows in an array of exuberant colours. The naturalistic Botanical Green and deep Eucalyptus are printed on an unbleached linen union, with the opulent Ink on a crisp cotton satin. Available in three colourways: Ink/Teal, Eucalyptus and Bottle Green all of which are suitable for upholstery.

**Width:** 139 cm

**Vertical Pattern Repeat:** 77.50 cm

**Horizontal Pattern Repeat:** 68 cm

**Match:** Straight

**Composition:** 100% Cotton

**Suitability:** General Dom Upholstery/  
Drapes/Blinds/Cushions

**Treatment Required:** FR19

**Care Instructions:** O

**Weight GSM:** 236

**Threads per Sq cm:** 74

**Average Yarn Number:** 37.3

**Martindale:** 20,000

**Tariff Code:** 52095900

# Sanderson



Botanical Green  
226570



Eucalyptus/Bengal  
226571



Ink/Papaya  
226572

**Design Name: Terrariums**

**Design Description:** A superb crisp digital print of elegant domed terrariums encasing a variety of succulent cacti and ornamental orchids. This Sanderson design is produced on a cotton satin, making it ideal for drapes and upholstery. Available in three colourways: Bottle Green, Eucalyptus/Bengal Red and Ink/Papaya

**Width:** 140 cm

**Vertical Pattern Repeat:** 61.5 cm

**Horizontal Pattern Repeat:** 92.5 cm

**Match:** Straight

**Composition:** 100% Cotton

**Suitability:** General Dom Upholstery/  
Drapes/Blinds/Cushions

**Treatment Required:** FR19

**Care Instructions:** O

**Weight GSM:** 236

**Threads per Sq cm:** 74

**Average Yarn Number:** 31.3

**Martindale:** 20,000

**Tariff Code:** 52095900

# Sanderson



Rhodera  
226573

**Design Name:** King Protea

**Design Description:** Taken from a Sanderson archive document of 1971 and repainted in watercolour, this all-over design celebrates the bold masculinity of the exotic King Protea flower. Printed in vibrant Rhodera red with lush green and teal leaves on a natural linen cloth and also in a more feminine soft blush pink tones with dove grey leaves on a cotton satin. Available in two colourways: Rhodera and Orchid/Grey

**Width:** 139 cm

**Vertical Pattern Repeat:** 62 cm

**Horizontal Pattern Repeat:** 139 cm

**Match:** Straight

**Composition:** 90% Cotton 10% Linen

**Suitability:** General Domestic Upholstery/  
Drapes/Blinds/Cushions

**Treatment Required:** FR19

**Care Instructions:** O

**Weight GSM:** 252

**Threads per Sq cm:** 38

**Average Yarn Number:** 15

**Martindale:** 20,000

**Tariff Code:** 53092900

# Sanderson



Orchid/Grey  
226574

**Design Name: King Protea**

**Design Description:** Taken from a Sanderson archive document of 1971 and repainted in watercolour, this all-over design celebrates the bold masculinity of the exotic King Protea flower. Printed in vibrant Rhodera red with lush green and teal leaves on a natural linen cloth and also in a more feminine soft blush pink tones with dove grey leaves on a cotton satin. Available in two colourways: Rhodera and Orchid/Grey

**Width:** 140 cm

**Vertical Pattern Repeat:** 63.5 cm

**Horizontal Pattern Repeat:** 140 cm

**Match:** Straight

**Composition:** 100% Cotton

**Suitability:** General Domestic Upholstery/  
Drapes/Blinds/Cushions

**Treatment Required:** FR19

**Care Instructions:** O

**Weight GSM:** 236

**Threads per Sq cm:** 74

**Average Yarn Number:** 31.3

**Martindale:** 20,000

**Tariff Code:** 53092900

# Sanderson



Botanical Green  
226575



Olive  
226576

**Design Name:** Calathea

**Design Description:** Originating in Brazil, the Calathea or 'Prayer Plant' was a favourite for illustration in the late 19th century due to its remarkable decorative foliage. Designed to grow as two striping columns across the width of the cloth, this botanical leaf is finely painted on a crisp cotton satin.

Available in two colourways: Botanical Green and Olive

**Width:** 139 cm

**Vertical Pattern Repeat:** 89 cm

**Horizontal Pattern Repeat:** 139 cm

**Match:** Straight

**Composition:** 100% Cotton

**Suitability:** General Dom Upholstery/  
Drapes/Blinds/Cushions

**Treatment Required:** FR19

**Care Instructions:** O

**Weight GSM:** 236

**Threads per Sq cm:** 74

**Average Yarn Number:** 31.3

**Martindale:** 20,000

**Tariff Code:** 52095900

# Sanderson



Olive  
226578

**Design Name:** Fernery

**Design Description:** A popular botanical subject, Fernery is a beautifully painted design depicting a variety of fern species - printed on crisp 100% cotton, with the exception the Olive colourway which is printed on natural linen. Available in four colourways: Bottle Green/Charcoal, Olive, China Blue and Botanical Green

**Width:** 138 cm

**Vertical Pattern Repeat:** 90 cm

**Horizontal Pattern Repeat:** 92 cm

**Match:** Half

**Composition:** 90% Cotton 10% Linen

**Suitability:** General Domestic Upholstery/  
Drapes/Blinds/Cushions

**Treatment Required:** FR19

**Care Instructions:** O

**Weight GSM:** 252

**Threads per Sq cm:** 38

**Average Yarn Number:** 15

**Martindale:** 20,000

**Tariff Code:** 52095900

# Sanderson



Botanical Green/Charcoal  
226577



Botanical Green  
226579



China Blue  
226580

**Design Name:** Fernery

**Design Description:** A popular botanical subject, Fernery is a beautifully painted design depicting a variety of fern species - printed on crisp 100% cotton, with the exception the Olive colourway which is printed on natural linen. Available in four colourways: Bottle Green/Charcoal, Olive, China Blue and Botanical Green

**Match:** Half

**Composition:** 100% Cotton

**Suitability:** General Domestic Upholstery/  
Drapes/Blinds/Cushions

**Treatment Required:** FR19

**Care Instructions:** O

**Weight GSM:** 236

**Threads per Sq cm:** 74

**Average Yarn Number:** 31

**Martindale:** 20,000

**Tariff Code:** 52095900

**Width:** 140 cm

**Vertical Pattern Repeat:** 89 cm

**Horizontal Pattern Repeat:** 91 cm



# Sanderson



Olive  
226581



Grey  
226582

**Design Name:** Ringtailed Lemur

**Design Description:** These friendly faced lemurs perch on a branching trail, beautifully drawn in pencil and watercolour extending the lemur's coat and long banding tail across a natural linen union. Available in two colourways: Grey and Olive

**Width:** 139 cm

**Vertical Pattern Repeat:** 52 cm

**Horizontal Pattern Repeat:** 91 cm

**Match:** Half

**Composition:** 90% Cotton 10% Linen

**Suitability:** General Domestic Upholstery/  
Drapes/Blinds/Cushions

**Treatment Required:** FR19

**Care Instructions:** O

**Weight GSM:** 252

**Threads per Sq cm:** 38

**Average Yarn Number:** 15

**Martindale:** 20,000

**Tariff Code:** 53092900

# Sanderson



Botanical  
226583

**Design Name:** Tulipomania

**Design Description:** A spectacular watercolour painting celebrating the beauty and diversity of tulips in full bloom, Tulipomania is available on cotton satin in a stunning naturalistic colour. There are two tulip bunches across the fabric width and the design is a straight matching repeat. Available in a Botanical colourway

**Width:** 139 cm

**Vertical Pattern Repeat:** 119 cm

**Horizontal Pattern Repeat:** 139 cm

**Match:** Straight

**Composition:** 100% Cotton

**Suitability:** General Dom Upholstery/  
Drapes/Blinds/Cushions

**Treatment Required:** FR19

**Care Instructions:** O

**Weight GSM:** 236

**Threads per Sq cm:** 74

**Average Yarn Number:** 31.3

**Martindale:** 20,000

**Tariff Code:** 52095900

# Sanderson



THE GLASSHOUSE WEAVES  
DESIGNS: 5

Accurately interpreting the exquisite detail of botanical drawings, The Glasshouse from Sanderson is a truly stunning collection of nine prints, two embroideries and three jacquards each respectfully designed to showcase the undeniable beauty of the original plant or flower.

# Sanderson



Lime  
236766



Rhodera  
236767



Crusoe Blue  
236768



Orchid White  
236769

**Design Name:** Tree Fern Weave

**Design Description:** A soft draping jacquard quality suitable for curtains and upholstery, this simply textured tree fern is silhouetted against a silky ground colour, offering elegant style and beautiful colour combinations whether used alone or in combination with The Glasshouse's prints and wallpapers. Available in four colourways: Orchid, Rhodera, Lime and Crusoe Blue

**Match:** Straight

**Composition:** 65% Viscose 25% Polyester  
10% Cotton

**Suitability:** General Domestic Upholstery/  
Drapes/Blinds/Cushions

**Treatment Required:** FR19

**Care Instructions:** N

**Weight GSM:** 327

**Threads per Sq cm:** 126

**Average Yarn Number:** 38.5

**Martindale:** 20,000

**Tariff Code:** 55151130

**Width:** 141 cm

**Vertical Pattern Repeat:** 45.5 cm

**Horizontal Pattern Repeat:** 70 cm

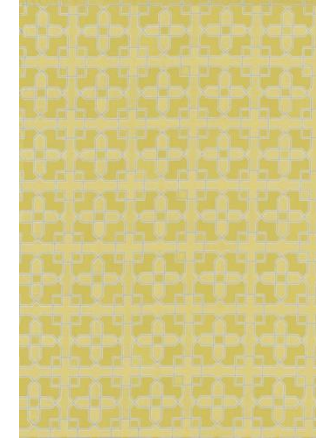
# Sanderson



Indigo  
236770



Glasshouse Grey  
236771



Mimosa  
236772



Botanical Green  
236773

**Design Name:** Hampton Weave

**Design Description:** This Sanderson jacquard trellis design has been woven with a variety of stitch constructions to give interest and texture. All four colour options can be used for both drapes and heavy domestic usage which co-ordinate throughout The Glasshouse collection. Available in four colourways: Indigo, Glasshouse Grey, Mimosa and Botanical Green

**Match:** Straight

**Composition:** 60% Viscose 25% Polyester  
15% Cotton

**Suitability:** Heavy Domestic Upholstery/  
Drapes/Blinds/Cushions

**Treatment Required:** FR19

**Care Instructions:** N

**Weight GSM:** 325

**Threads per Sq cm:** 122

**Average Yarn Number:** 37.5

**Martindale:** 40,000

**Tariff Code:** 55151130

**Width:** 138 cm

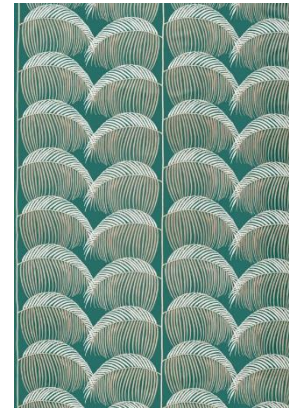
**Vertical Pattern Repeat:** 24 cm

**Horizontal Pattern Repeat:** 23 cm

# Sanderson



Lime  
236774



Eucalyptus  
236775



Indigo  
236776

**Design Name:** Manila Embroidery

**Design Description:** Originally a wallpaper, this stylised fern design has been converted in to a contemporary fabric, with fine viscose embroidered yarns densely stitched to ensure the design retains its smart, clean and refined look. Available in three colourways: Lime, Eucalyptus and Indigo

**Width:** 136 cm

**Vertical Pattern Repeat:** 22.8 cm

**Horizontal Pattern Repeat:** 66.5 cm

**Match:** Straight

**Composition:** 57% Viscose 43% Cotton

**Suitability:** Heavy Domestic Upholstery/  
Drapes/Blinds/Cushions

**Treatment Required:** FR17

**Care Instructions:** N

**Weight GSM:** 510

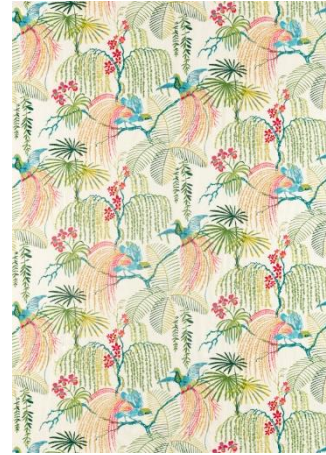
**Threads per Sq cm:** 71

**Average Yarn Number:** 13.9

**Martindale:** 40,000

**Tariff Code:** 58109910

# Sanderson



Tropical  
236777



Tropical Night  
236778

**Design Name: Rainforest Embroidery**

**Design Description:** An exciting discovery from the Sanderson archive (drawn by F.M.Barnett c.1961), this intricate design was immediately adopted and translated into this stunning embroidery with its bright array of tropical colours adorning a choice of base cloths. Available two colourways: Tropical and Tropical Night

**Width:** 129 cm

**Vertical Pattern Repeat:** 58 cm

**Horizontal Pattern Repeat:** 127 cm

**Match:** Straight

**Composition:** 70% Cotton 30% Polyester

**Suitability:** Drapes/Blinds/Cushions

**Treatment Required:** FR27

**Care Instructions:** N

**Weight GSM:** 340

**Threads per Sq cm:** 121

**Average Yarn Number:** 35.6

**Martindale:** N/A

**Tariff Code:** 58109110

# Sanderson



Orchid Grey  
236779



Botanical Green  
236780

**Design Name:** Fernery Weave

**Design Description:** This simply spaced and elegant fern design has been finely woven on a jacquard loom giving a luxurious drape. Available in natural Botanical Green and soft blue grey with a twist of blush.

Available in two colourways: Orchid Grey and Botanical Green

**Width:** 140 cm

**Vertical Pattern Repeat:** 68 cm

**Horizontal Pattern Repeat:** 47 cm

**Match:** Straight

**Composition:** 70% Viscose 16% Polyester  
14% Cotton

**Suitability:** Drapes/Blinds/Cushions

**Treatment Required:** FR27

**Care Instructions:** N

**Weight GSM:** 505

**Threads per Sq cm:** 520

**Average Yarn Number:** 102.9

**Martindale:** N/A

**Tariff Code:** 55169200



# Sanderson



## LINNEAN WEAVES

### WEAVES

DESIGNS: 5

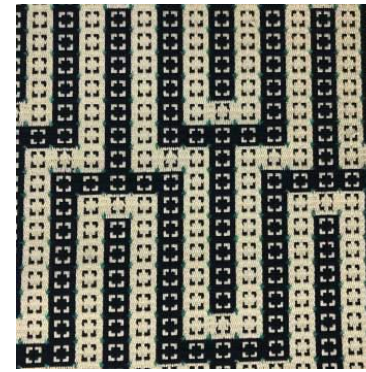
Introducing Linnean Weaves, a selection of five smart designs in a variety of striking botanical colours. This range of versatile geometrics, striking chevrons and modern herringbones perfectly complement The Glasshouse from Sanderson.

Named after Carl Linnaeus, the 18th century scientist credited with developing a system to classify living things, Linnean Weaves pays homage to Linnaeus and his system's ability to convey complex relationships to scientists around the world. Suitable for upholstery and drapes, Linnean Weaves is the perfect co-ordinate to The Glasshouse fabric and wallpapers.

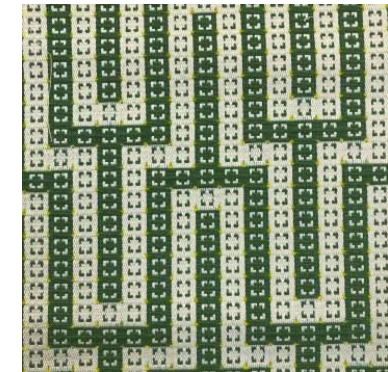
# Sanderson



Crusoe Blue  
236782



Indigo  
236783



Botanical Green  
236784

**Design Name:** Linnean

**Design Description:** A smart, unique geometric in six essential colours all contrasted with neutral and decorative highlight stitched dots.

Available in six colourways: Crusoe Blue, Indigo, Botanical Green, Lime, Tropical Palm and Stone Grey

**Width:** 141.5 cm

**Vertical Pattern Repeat:** 9.5 cm

**Horizontal Pattern Repeat:** 9 cm

**Match:** Straight

**Composition:** 76% Viscose 19% Polyester  
5% Acrylic

**Suitability:** General Dom

Upholstery/Drapes/Blinds/Cushions

**Treatment Required:** FR19

**Care Instructions:** AN

**Weight GSM:** 560

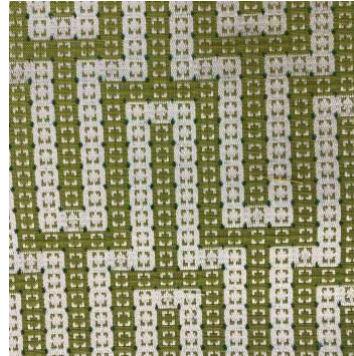
**Threads per Sq cm:** 93

**Average Yarn Number:** 16.6

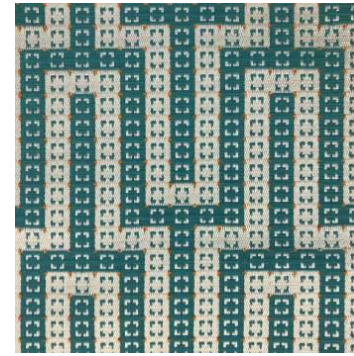
**Martindale:** 20,000

**Tariff Code:** 58013600

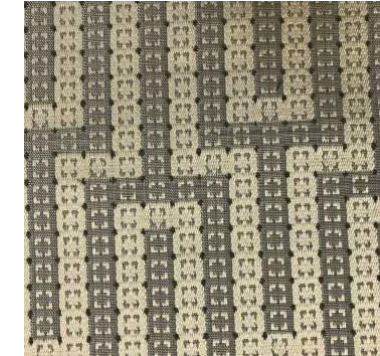
# Sanderson



Lime  
236785



Tropical Palm  
236786



Stone Grey  
236787

**Design Name:** Linnean

**Design Description:** A smart, unique geometric in six essential colours all contrasted with neutral and decorative highlight stitched dots.

Available in six colourways: Crusoe Blue, Indigo, Botanical Green, Lime, Tropical Palm and Stone Grey

**Width:** 141.5 cm

**Vertical Pattern Repeat:** 9.5 cm

**Horizontal Pattern Repeat:** 9 cm

**Match:** Straight

**Composition:** 76% Viscose 19% Polyester  
5% Acrylic

**Suitability:** General Dom  
Upholstery/Drapes/Blinds/Cushions

**Treatment Required:** FR19

**Care Instructions:** AN

**Weight GSM:** 560

**Threads per Sq cm:** 93

**Average Yarn Number:** 16.6

**Martindale:** 20,000

**Tariff Code:** 58013600

# Sanderson



Bengal Red  
236788



Tropical Palm  
236789



Lime  
236790



Papaya  
236791

## Design Name: Botanic Trellis

**Design Description:** A crisp trellis structure of hexagons and diamonds woven with different yarns to add dimension and relief to this easy to use design. Add pops of colour to your decorating story with brights such as Rhodera Pink, Tropical Palm, Bengal Red and Lime as well as the more earthy tones of Papaya, Blue Clay, Flint and Stone Grey. Available in eight colourways: Bengal Red, Tropical Palm, Lime, Papaya, Blue Clay, Flint, Stone Grey and Rhodera

**Match:** Straight

**Composition:** 40% Cotton 31% Viscose  
15% Polyester 14% Linen

**Suitability:** Drapes/Blinds/Cushions

**Treatment Required:** FR20

**Care Instructions:** N

**Weight GSM:** 576

**Threads per Sq cm:** 222

**Average Yarn Number:** 38.5

**Martindale:** 40,000

**Tariff Code:** 55169200

**Width:** 140 cm

**Vertical Pattern Repeat:** 8 cm

**Horizontal Pattern Repeat:** 5.8 cm

# Sanderson



Blue Clay  
236791



Flint  
236793



Stone Grey  
236794



Rhodera  
236795

**Design Name: Botanic Trellis**

**Design Description:** A crisp trellis structure of hexagons and diamonds woven with different yarns to add dimension and relief to this easy to use design. Add pops of colour to your decorating story with brights such as Rhodera Pink, Tropical Palm, Bengal Red and Lime as well as the more earthy tones of Papaya, Blue Clay, Flint and Stone Grey. Available in eight colourways: Bengal Red, Tropical Palm, Lime, Papaya, Blue Clay, Flint, Stone Grey and Rhodera

**Width:** 140 cm

**Vertical Pattern Repeat:** 8 cm

**Horizontal Pattern Repeat:** 5.8 cm

**Match:** Straight

**Composition:** 40% Cotton 31% Viscose  
15% Polyester 14% Linen

**Suitability:** Drapes/Blinds/Cushions

**Treatment Required:** FR20

**Care Instructions:** N

**Weight GSM:** 576

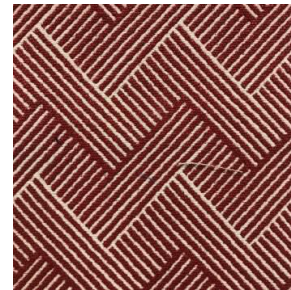
**Threads per Sq cm:** 222

**Average Yarn Number:** 38.5

**Martindale:** 40,000

**Tariff Code:** 55169200

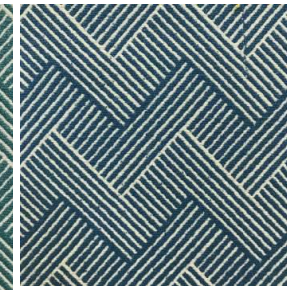
# Sanderson



Bengal Red  
236796



Tropical Palm  
26797



Marine  
236798



Stone Grey  
236798



Lime  
236800

**Design Name:** Nelson

**Design Description:** Named after David Nelson the gardener and botanist aboard HMS Bounty, this modern herringbone form Sanderson is woven with thick and thin yarns to give a subtle texture and relief. Available in five colourways: Bengal Red, Tropical Palm, Marine, Stone Grey and Lime

**Width:** 138 cm

**Vertical Pattern Repeat:** 7 cm

**Horizontal Pattern Repeat:** 5.8 cm

**Match:** Straight

**Composition:** 40% Cotton 31% Viscose  
15% Polyester 14% Linen

**Suitability:** Severe Contract  
Upholstery/Drapes/Blinds/Cushions

**Treatment Required:** FR20

**Care Instructions:** N

**Weight GSM:** 585

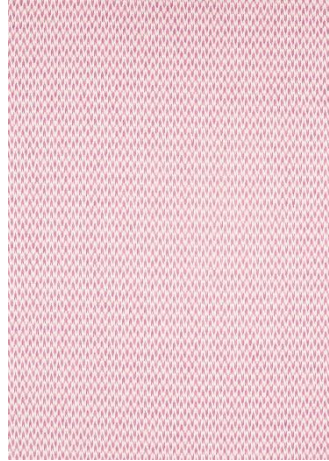
**Threads per Sq cm:** 222

**Average Yarn Number:** 37.9

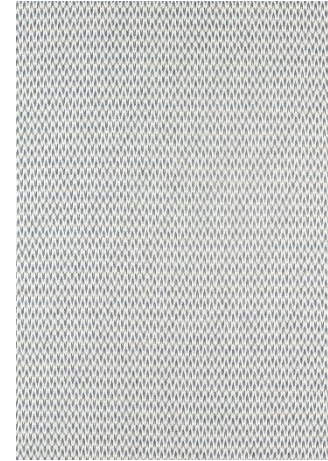
**Martindale:** 45,000

**Tariff Code:** 55169200

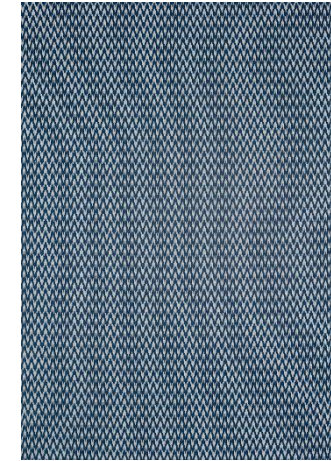
# Sanderson



Pink Orchid  
236801



Indigo  
236802



Midnight Blue  
236803



Lime  
236804

**Design Name:** Hutton

**Design Description:** This striking ikat weave is named after the esteemed nineteenth century Scottish botanist, John Hutton Balfour. Relaxed and extremely versatile, the design's repeating motif is woven in seven colour stories that work throughout The Glasshouse collection. Available in seven colourways: Pink Orchid, Indigo, Midnight Blue, Lime, Papaya, Blue Clay and Silver Fern

**Width:** 139.5 cm

**Vertical Pattern Repeat:** 4.8 cm

**Horizontal Pattern Repeat:** 3 cm

**Match:** Straight

**Composition:** 68% Viscose 29% Linen  
3% Polyester

**Suitability:** General Domestic  
Upholstery/Drapes/Blinds/Cushions

**Treatment Required:** FR19

**Care Instructions:** N

**Weight GSM:** 512

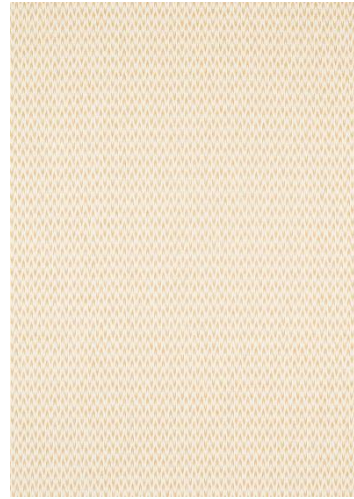
**Threads per Sq cm:** 76

**Average Yarn Number:** 14.8

**Martindale:** 25,000

**Tariff Code:** 55169200

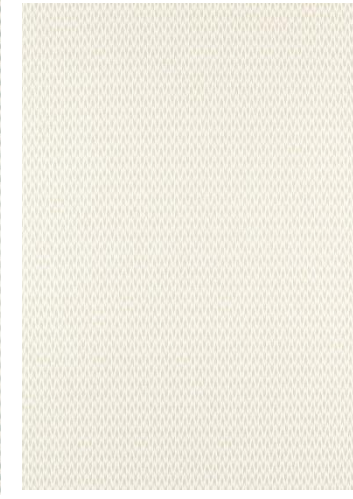
# Sanderson



Papaya  
236805



Blue Clay  
236806



Silver Fern  
236807

**Design Name:** Hutton

**Design Description:** This striking ikat weave is named after the esteemed nineteenth century Scottish botanist, John Hutton Balfour. Relaxed and extremely versatile, the design's repeating motif is woven in seven colour stories that work throughout The Glasshouse collection. Available in seven colourways: Pink Orchid, Indigo, Midnight Blue, Lime, Papaya, Blue Clay and Silver Fern

**Width:** 139.5 cm

**Vertical Pattern Repeat:** 4.8 cm

**Horizontal Pattern Repeat:** 3 cm

**Match:** Straight

**Composition:** 68% Viscose 29% Linen  
3% Polyester

**Suitability:** General Domestic  
Upholstery/Drapes/Blinds/Cushions

**Treatment Required:** FR19

**Care Instructions:** N

**Weight GSM:** 512

**Threads per Sq cm:** 76

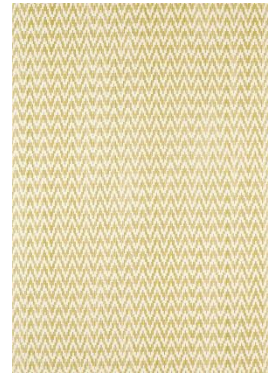
**Average Yarn Number:** 14.8

**Martindale:** 25,000

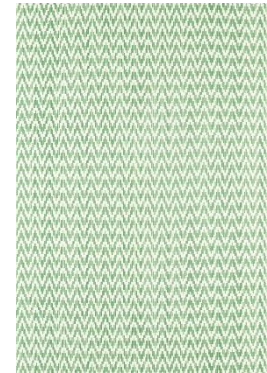
**Tariff Code:** 55169200



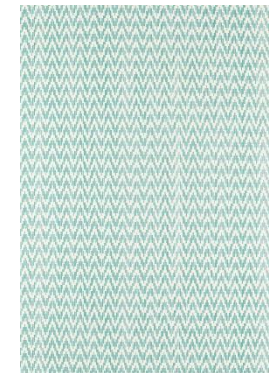
# Sanderson



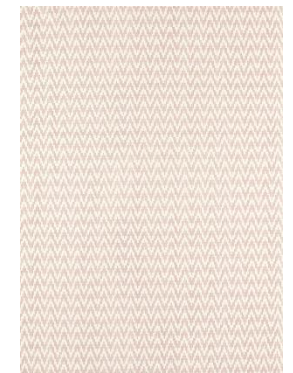
Mimosa  
236808



Botanical Green  
236809



Tropical Palm  
236810



Orchid  
236811

**Design Name:** Fenne

**Design Description:** A stylised midscale chevron woven with a striae effect to add movement and interest, Fenne's soft and fresh colourways coordinate beautifully with The Glasshouse's other designs. Available in four colourways: Mimosa, Botanical Green, Tropical Palm and Orchid

**Match:** Straight

**Composition:** 100% Cotton

**Suitability:** General Contract  
Upholstery/Drapes/Blinds/Cushions

**Treatment Required:** FR20

**Care Instructions:** N

**Weight GSM:** 462

**Threads per Sq cm:** 172

**Average Yarn Number:** 37.2

**Martindale:** 35,000

**Tariff Code:** 52095900

**Width:** 136.5 cm

**Vertical Pattern Repeat:** 6.5 cm

**Horizontal Pattern Repeat:** 6.7 cm

# Sanderson



The Glasshouse  
WALLPAPERS  
DESIGNS: 11

Accurately interpreting the exquisite detail of botanical drawing, The Glasshouse from Sanderson is a truly stunning collection of eleven wallpapers, each respectfully designed to showcase the undeniable beauty of the original plant or flower.

Subtle textural looks meld with silhouetted shapes and metallic highlights while tropical tones such as Rhodera and Eucalyptus meet with Blush and Aqua to name a few. A complementary fabric book is also available.

# Sanderson



Botanical Green  
216630



Olive  
216631



Orchid/Eucalyptus  
216632

**Design Name:** Calathea

**Design Description:** Originating in Brazil, the Calathea or 'Prayer Plant' was a favourite for illustration in the late 19th century due to its remarkable decorative foliage. Elegant and strikingly detailed, this wide-width wallpaper from Sanderson creates a striped pillar of abundant tropical leaves across the wall. A matching fabric is also available. Available in three colourways: Botanical Green, Olive and Orchid/Eucalyptus

**Pattern Repeat:** 76.2 cm

**Match:** Half Drop

**Width:** 68.6 cm

**Composition:** Wide Width Printed

**Care Instructions:** WBD

**Print Method:** Gravure

**Roll Dimensions:** 10.05L x 68.6W

**Tariff Code:** 48142000

# Sanderson



Botanical Green  
216633



Botanical Green/Charcoal  
216634



China Blue  
216635

**Design Name:** Fernery

**Design Description:** Inspired by the nineteenth century craze for fern collecting and the drawings in subsequent botanist's publications, this beautifully illustrated Sanderson wallpaper displays diverse and characterful leaf shapes and fragile fronds. Available in three classic colourways: Botanical Green, Botanical Green/Charcoal and China Blue

**Pattern Repeat:** 76.2 cm

**Match:** Half Drop

**Width:** 68.6 cm

**Composition:** Wide Width Printed

**Care Instructions:** WBD

**Print Method:** Gravure

**Roll Dimensions:** 10.05L x 68.6W

**Tariff Code:** 48142000

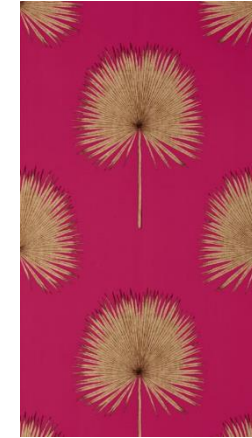
# Sanderson



Botanical Green  
216636



Linen/Gilver  
216637



Rhodera/Gilver  
216638



Charcoal/Gold  
216639

**Design Name:** Fan Palm

**Design Description:** A smart useable wallpaper for a variety of living spaces, Fan Palm from Sanderson creates an elegant silhouette shape with fine line work bringing a subtle textural look. Metallic inks offset with the Linen, Charcoal and Rhodera colourways to dramatic effect. Available in four colourways: Botanical Green, Linen/Gilver, Rhodera/Gilver and Charcoal/Gold

**Pattern Repeat:** 52 cm

**Match:** Straight

**Width:** 52 cm

**Composition:** Printed

**Care Instructions:** WBE

**Print Method:** Gravure

**Roll Dimensions:** 10.05L x 52W

**Tariff Code:** 48142000

# Sanderson



Teal/Gold  
216640



Charcoal/Gold  
216641



Chartreuse/Grey  
216642



Botanical Green  
216643



Linen/Gilver  
216644

**Design Name:** Palm House

**Design Description:** Opaque inks and a hand blocked look give Palm House from Sanderson an almost layered appearance as if the palms are brought to life and gently swaying in the breeze. Available in five colourways: Teal/Gold, Charcoal/Gold, Chartreuse/Grey, Botanical Green and Linen/Gilver

**Pattern Repeat:** 61 cm

**Match:** Straight

**Width:** 52 cm

**Composition:** Surflex Printed

**Care Instructions:** WN

**Print Method:** Surflex

**Roll Dimensions:** 10.05L x 52W

**Tariff Code:** 48142000

# Sanderson



Aqua/Linen  
216645



Rhodera/Cream  
216646



Linen/Mica  
216647

**Design Name:** King Protega

**Design Description:** Inspired by an original Sanderson archive document, the majestic flowerheads of the King Protea plant have been faithfully interpreted and recoloured to create this stunning statement wallpaper. The design's sophisticated Linen colourway gives a hint of glamour against the matt tone work, which together with the Aqua colourway has lovely mica highlights. Available in three colourways: Aqua, Rhodera and Linen

**Pattern Repeat:** 68.6 cm

**Match:** Half Drop

**Width:** 68.6 cm

**Composition:** Wide Width Printed

**Care Instructions:** WBD

**Print Method:** Gravure

**Roll Dimensions:** 10.05L x 68.6W

**Tariff Code:** 48142000

# Sanderson



Sky/Green  
216648



Botanical Green  
216649



Grey/Gilver  
216650



Charcoal/Gold  
216651

**Design Name:** Yucca

**Design Description:** Specially formulated surface inks offer superb coverage and stunning metallic effects in this fabulous abstract striping yucca wallpaper from Sanderson. Available in four colourways: Sky, Botanical Green, Grey/Gilver and Charcoal/Gold

**Pattern Repeat:** 52 cm

**Match:** Random

**Width:** 52 cm

**Composition:** Wide Width Surface Printed

**Care Instructions:** WO

**Print Method:** Surface

**Roll Dimensions:** 10.05L x 52W

**Tariff Code:** 48142000



# Sanderson



Linen  
216652



Olive  
216653



Orchid  
216654

**Design Name:** Bird of Paradise

**Design Description:** Sharing a bird's eye view of the jungle canopy surrounded by orchids, foliage and feathers, this fabulous design from the Sanderson archive has been painted with pencil and watercolour in a more botanical style whilst retaining its key elements. Available in three colourways: Linen, Olive and Orchid

**Pattern Repeat:** 76.2 cm

**Match:** Half Drop

**Width:** 68.6 cm

**Composition:** Wide Width Printed

**Care Instructions:** WBD

**Print Method:** Gravure

**Roll Dimensions:** 10.05L x 68.6W

**Tariff Code:** 48142000

# Sanderson



Chalk/Green  
216655



Botanical Green/Multi  
216656



Rhodera/Multi  
216657



Ink/Multi  
216658

## Design Name: Terrariums

**Design Description:** A fabulous and unique design depicting exquisitely observed cactus plants and orchid flowers encapsulated in a glass-domed terrarium. Mica highlights capture the sheen from the top of the dome. A corresponding fabric is available.

Available in four colourways: Chalk/Green, Eucalyptus, Ink and Botanical Green/Multi

**Pattern Repeat:** 68.6 cm

**Match:** Half Drop

**Width:** 52 cm

**Composition:** Gravure Printed

**Care Instructions:** WBD

**Print Method:** Gravure

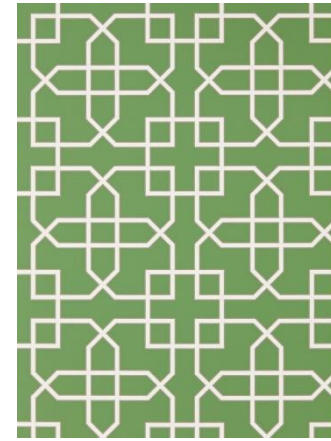
**Roll Dimensions:** 10.05L x 52W

**Tariff Code:** 48142000

# Sanderson



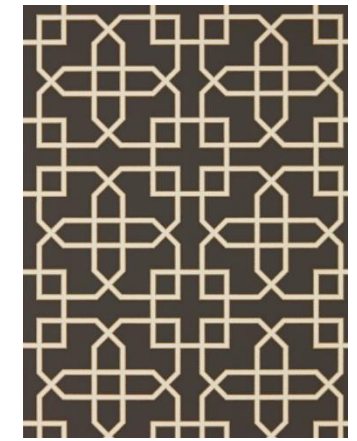
Linen  
216659



Botanical Green  
216660



Grey  
216661



Charcoal  
216662

**Design Name:** Hampton Trellis

**Design Description:** Hampton Trellis coordinates magnificently with all designs in The Glasshouse collection. Named after the wonderful maze at Hampton Court, this smart structural geometric pattern has been rotary printed to provide a chalky opaque ground against the metallic and glitter detailing of the trellis design. Available in four colourways: Linen, Botanical Green, Grey and Charcoal

**Pattern Repeat:** 32 cm

**Match:** Straight

**Width:** 68.6 cm

**Composition:** Wide Width Printed

**Care Instructions:** WBE

**Print Method:** Rotary/Gravure  
**Roll Dimensions:** 10.05L x 68.6W  
**Tariff Code:** 48142000

# Sanderson



Teal  
216663



Cream/Olive  
216664



Stone/Eucalyptus  
216665

**Design Name:** Ringtailed Lemur

**Design Description:** A wonderfully charming wallpaper, gravure printed to accurately translate the beautiful art work and tones of this characterful design, Ring-tailed Lemur is a real head turner. Available in three colourways: Teal, Olive and Stone/Eucalyptus

**Pattern Repeat:** 61 cm

**Match:** Half Drop

**Width:** 52 cm

**Composition:** Gravure Printed

**Care Instructions:** WBD

**Print Method:** Gravure

**Roll Dimensions:** 10.05L x 68.6W

**Tariff Code:** 48142000

# Sanderson



Botanical  
216666



Ink  
216667

**Design Name:** Tulipomania

**Design Description:** A spectacular watercolour painting celebrating the beauty and diversity of tulips in full bloom, Tulipomania contrasts strikingly against its background of either a clean white or deep indigo, overprinted with burnished gold mica. Tulipomania is a super wide width wallpaper (137cm wide by 120cm high) with a straight match. Available in two colourways: Ink and Botanical

**Pattern Repeat:** 119.8 cm

**Match:** Straight

**Width:** 137 cm

**Composition:** Wide Width Digital Printed

**Care Instructions:** WN

**Print Method:** Digital

**Roll Dimensions:** 10.05L x 68.6W

**Tariff Code:** 48142000

# Sanderson

Product	Design Name	Pattern Match	Width (cms)	Repeat (cms)	Composition	FR Code	Upholstery	Drapes	Blinds	Cushions	Care Code
226559	Jackfruit	HD	139	63.50	100%C	FR19	GD	•	•	•	O
226560	Jackfruit	HD	139	63.50	100%C	FR19	GD	•	•	•	O
226561	Jackfruit	HD	139	62.00	90%C 10%L	FR19	GD	•	•	•	O
226562	Jackfruit	HD	139	62.00	90%C 10%L	FR19	GD	•	•	•	O
226563	Paradesia	S	139	91.00	100%C	FR19	GD	•	•	•	O
226566	Paradesia	S	139	91.00	100%C	FR19	GD	•	•	•	O
226564	Paradesia	S	139	88.00	90%C 10%L	FR19	GD	•	•	•	O
226565	Paradesia	S	139	88.00	90%C 10%L	FR19	GD	•	•	•	O
226567	Palm House	S	140	77	90%C 10%L	FR19	GD	•	•	•	O
226569	Palm House	S	140	77	90%C 10%L	FR19	GD	•	•	•	O
226568	Palm House	S	139	77.50	100%C	FR19	GD	•	•	•	O
226570	Terrariums	S	140	61.50	100%C	FR19	GD	•	•	•	O
226571	Terrariums	S	140	61.50	100%C	FR19	GD	•	•	•	O
226572	Terrariums	S	140	61.50	100%C	FR19	GD	•	•	•	O
226573	King Protea	S	139	62.00	90%C 10%L	FR19	GD	•	•	•	O
226574	King Protea	S	140	63.5	100%C	FR19	GD	•	•	•	O
226575	Calathea	S	139	89.00	100%C	FR19	GD	•	•	•	O
226576	Calathea	S	139	89.00	100%C	FR19	GD	•	•	•	O
226578	Fernery	HD	138	90	90%C 10%L	FR19	GD	•	•	•	O
226577	Fernery	HD	140	89	100%C	FR19	GD	•	•	•	O
226579	Fernery	HD	140	89	100%C	FR19	GD	•	•	•	O
226580	Fernery	HD	140	89	100%C	FR19	GD	•	•	•	O
226581	Ringtailed Lemur	HD	139	52	90%C 10%L	FR19	GD	•	•	•	O
226582	Ringtailed Lemur	HD	139	52	90%C 10%L	FR19	GD	•	•	•	O
226583	Tulipomania	S	139	119	100%C	FR19	GD	•	•	•	O
236766	Tree Fern Weave	S	141	45.5	65%V 25%P 10%C	FR19	GD	•	•	•	N
236767	Tree Fern Weave	S	141	45.5	65%V 25%P 10%C	FR19	GD	•	•	•	N
236768	Tree Fern Weave	S	141	45.5	65%V 25%P 10%C	FR19	GD	•	•	•	N
236769	Tree Fern Weave	S	141	45.5	65%V 25%P 10%C	FR19	GD	•	•	•	N

# Sanderson

Product	Design Name	Pattern Match	Width (cms)	Repeat (cms)	Composition	FR Code	Upholstery	Drapes	Blinds	Cushions	Care Code
236770	Hampton Weave	S	138	24.00	60%V 25%P 15%C	FR19	HD	•	•	•	N
236771	Hampton Weave	S	138	24.00	60%V 25%P 15%C	FR19	HD	•	•	•	N
236772	Hampton Weave	S	138	24.00	60%V 25%P 15%C	FR19	HD	•	•	•	N
236773	Hampton Weave	S	138	24.00	60%V 25%P 15%C	FR19	HD	•	•	•	N
236774	Manila Embroidery	S	136	22.8	57%V 43%C	FR17	HD	•	•	•	N
236775	Manila Embroidery	S	136	22.8	57%V 43%C	FR17	HD	•	•	•	N
236776	Manila Embroidery	S	136	22.8	57%V 43%C	FR17	HD	•	•	•	N
236777	Rainforest Embroidery	S	129	58.00	70%C 30%P	FR27	n/a	•	•	•	N
236778	Rainforest Embroidery	S	129	58.00	70%C 30%P	FR27	n/a	•	•	•	N
236779	Fernery Weave	S	140	68.00	70%V 16%P 14%C	FR27	n/a	•	•	•	N
236779	Fernery Weave	S	140	68.00	70%V 16%P 14%C	FR27	n/a	•	•	•	N
236782	Linnean	S	141.5	9.5	76%V 19%P 5%	FR19	GD	•	•	•	N
236783	Linnean	S	141.5	9.5	76%V 19%P 5%	FR19	GD	•	•	•	N
236784	Linnean	S	141.5	9.5	76%V 19%P 5%	FR19	GD	•	•	•	N
236785	Linnean	S	141.5	9.5	76%V 19%P 5%	FR19	GD	•	•	•	N
236786	Linnean	S	141.5	9.5	76%V 19%P 5%	FR19	GD	•	•	•	N
236787	Linnean	S	141.5	9.5	76%V 19%P 5%	FR19	GD	•	•	•	N
236788	Botanic Trellis	S	140	8.00	40%C 31%V 15%P 14%L	FR20	n/a	•	•	•	N
236789	Botanic Trellis	S	140	8.00	40%C 31%V 15%P 14%L	FR20	n/a	•	•	•	N
236790	Botanic Trellis	S	140	8.00	40%C 31%V 15%P 14%L	FR20	n/a	•	•	•	N
236791	Botanic Trellis	S	140	8.00	40%C 31%V 15%P 14%L	FR20	n/a	•	•	•	N
236792	Botanic Trellis	S	140	8.00	40%C 31%V 15%P 14%L	FR20	n/a	•	•	•	N
236793	Botanic Trellis	S	140	8.00	40%C 31%V 15%P 14%L	FR20	n/a	•	•	•	N
236794	Botanic Trellis	S	140	8.00	40%C 31%V 15%P 14%L	FR20	n/a	•	•	•	N
236795	Botanic Trellis	S	140	8.00	40%C 31%V 15%P 14%L	FR20	n/a	•	•	•	N

# Sanderson

Product	Design Name	Pattern Match	Width (cms)	Repeat (cms)	Composition	FR Code	Upholstery	Drapes	Blinds	Cushions	Care Code
236801	Hutton	S	139.5	4.8	68%V 29%L 3%P	FR19	GD	•	•	•	N
236802	Hutton	S	139.5	4.8	68%V 29%L 3%P	FR19	GD	•	•	•	N
236803	Hutton	S	139.5	4.8	68%V 29%L 3%P	FR19	GD	•	•	•	N
23804	Hutton	S	139.5	4.8	68%V 29%L 3%P	FR19	GD	•	•	•	N
236805	Hutton	S	139.5	4.8	68%V 29%L 3%P	FR19	GD	•	•	•	N
236806	Hutton	S	139.5	4.8	68%V 29%L 3%P	FR19	GD	•	•	•	N
236807	Hutton	S	139.5	4.8	68%V 29%L 3%P	FR19	GD	•	•	•	N
236808	Fenne	S	136.5	6.5	100%C	FR20	GD	•	•	•	N
236809	Fenne	S	136.5	6.5	100%C	FR20	GD	•	•	•	N
236810	Fenne	S	136.5	6.5	100%C	FR20	GD	•	•	•	N
236811	Fenne	S	136.5	6.5	100%C	FR20	GD	•	•	•	N



# Sanderson

Product	Design Name	Pattern Match	Repeat (cms)	Width (cms)
216630	Calathea	HD	76.2	68.6
216631	Calathea	HD	76.2	68.6
216932	Calathea	HD	76.2	68.6
216633	Fernery	HD	76.2	68.6
216634	Fernery	HD	76.2	68.6
216635	Fernery	HD	76.2	68.6
216636	Fan Palm	S	52.00	52.00
216637	Fan Palm	S	52.00	52.00
216638	Fan Palm	S	52.00	52.00
216639	Fan Palm	S	52.00	52.00
216640	Palm House	S	61	52.00
216641	Palm House	S	61	52.00
216642	Palm House	S	61	52.00
216643	Palm House	S	61	52.00
216644	Palm House	S	61	52.00
216645	King Protea	HD	68.6	68.6
216646	King Protea	HD	68.6	68.6
216647	King Protea	HD	68.6	68.6
216648	Yucca	R	52.00	52.00
216649	Yucca	R	52.00	52.00
216650	Yucca	R	52.00	52.00
216651	Yucca	R	52.00	52.00
216652	Bird of Paradise	HD	76.2	68.6
216653	Bird of Paradise	HD	76.2	68.6
216654	Bird of Paradise	HD	76.2	68.6
216655	Terrariums	HD	68.6	52.00
216656	Terrariums	HD	68.6	52.00
216657	Terrariums	HD	68.6	52.00
216658	Terrariums	HD	68.6	52.00
216659	Hampton Trellis	S	32.00	68.6
216660	Hampton Trellis	S	32.00	68.6
216661	Hampton Trellis	S	32.00	68.6
216662	Hampton Trellis	S	32.00	68.6
216663	Ringtailed Lemur	HD	61.00	52.00
216664	Ringtailed Lemur	HD	61.00	52.00
216665	Ringtailed Lemur	HD	61.00	52.00
216666	Tulipomania	S	61.00	137.00
216667	Tulipomania	S	119.8	137.00

# Sanderson

## The Glasshouse

<b>Fernery (550mm strip+ litho)</b>	<b>Calantha (550mm strip+ litho)</b>	<b>Palm House (550mm strip+ litho)</b>
226580	226575	226567
226579	226576 ½ width feeler	226568
226578		226569 ½ width feeler
226577 ½ width feeler		
<b>King Protea (550mm strip + litho)</b>	<b>Paradesia (550mm strip+ litho)</b>	<b>Terrariums (550mm strip+ litho)</b>
226573	226564	226571
226574 ½ width feeler	226565	226572
	226566	226570 ½ width feeler
	226563 ½ width feeler	
<b>Lemur ( selective Cut)</b>	<b>Tulipomania ( full width Feeler)</b>	<b>Jackfruit (550mm strip+ litho)</b>
226582	226583 Full Width Feeler	226559
226581 ½ width feeler		226562
		226561
		226560 ½ width feeler
<b>Manila Embroidery (550mm strip + litho)</b>	<b>Tree Fern Weave (285mm loop)</b>	<b>Hampton Weave (285mm loop)</b>
236776	236768	236771
236775	236766	236770
236774 ½ width feeler	236769	236773
	236767 ½ width feeler	236772 ½ width feeler
<b>Rain Forest Embroidery (550mm strip + litho)</b>	<b>Fernery Weave (550mm strip + litho)</b>	
236777	236780	
236778 ½ width feeler	236779 ½ width feeler	

## Linnean Weaves

<b>Linnean (285mm loop)</b>	<b>Nelson (285mm loop)</b>	<b>Fenne (285mm loop)</b>
236787	236796	236811
236783	236798	236810
236782	236797	236809
236786	236800	236808 ½ width feeler
236784	236799 ½ width feeler	132897 ½ width feeler
236785 ½ width feeler		
<b>Botanical Trellis (285mm loop)</b>	<b>Hutton (285mm loop)</b>	
236795	236801	
236788	236802	
236791	236803	
236793	236807	
236794	236805	
236790	236804	
236789	236806 ½ width feeler	
236792 ½ width feeler		

## PATTERN BOOK INFO

Pattern Book	Code
The Glasshouse WP	276346
The Glasshouse Fabrics	276346
Linnean Weaves	276347

# Sanderson

CARE CODES

**A**

**B**

**B3**

**B7**

**B15**

**B17**

**C**

**D**

**F**

**H**

**M**

**N**

**O**

**P**

**Q**

**R**

**S**

**T**

**U**

**V**

**Z**

**AC**

IRON ON REVERSE

**AE**

**AF**

**AI**

**AL**

IRON ON REVERSE

**AM**

IRON ON REVERSE

**AN**

IRON ON REVERSE

**AO**

**AP**

**AQ**

**AW**

**AX**

**AY**

# Sanderson

FR1	Meets Cigarette Test BS5852 (0) (Less Than 75% Natural Fibres) Treatable to BS5852 (1) Match Test
FR2	Meets Cigarette Test BS5852 (0) (Less Than 75% Natural Fibres) Treatable to BS5852 (1) Match Test and BS5867 Part 2 Type B Contract Drapes
FR3	Meets Cigarette Test BS5852 (0) (Less Than 75% Natural Fibres) Treatable to BS5852 (1) Match Test BS5852 (5) Crib 5 Contract Uph and BS5867 Part 2 Type B Contract Drapes.
FR4	Meets Cigarette and Match Test BS5852 (0) & (1)
FR5	Meets Cigarette and Match Test BS5852 (0) & (1) & BS5867 Part 2 Type B Contract Drapes
FR6	Meets Cigarette and Match Test BS5852 (0) & (1) & BS5867 Part 2 Type C Contract Drapes
FR7	Meets Cigarette and Match Test BS5852 (0) & (1) Treatable to BS5867 Part 2 Type B Contract Drapes
FR8	Meets Cigarette and Match Test BS5852 (0) & (1) Treatable to BS5852 (5) Crib 5 Contract Uph & BS5867 Part 2 Type B Contract Drapes
FR9	Meets BS5852 Contract Uph Crib 5 (BS7176)
FR10	Treatable BS5852 Contract Uph Crib 5 (BS7176)
FR11	Meets Cigarette and Match Test BS5852 (0) (1) & BS5852 Contract Uph Crib 5 (BS7176)
FR12	Meets Cigarette and Match Test BS5852 (0) (1) BS5852 Contract Uph Crib 5 (BS7176) & BS5867 Part 2 Type B Contract Drapes
FR13	Meets Cigarette and Match Test BS5852 (0) (1) BS5852 Contract Uph Crib 5 (BS7176) Treatable to BS5867 Part 2 Type B Contract Drapes
FR14	Meets BS5852 Contract Uph Only Crib 5 (BS7176)
FR15	Meets BS5867 Part 2 Type B (Contract Drapes)
FR16	Meets Cigarette Test BS5852 (0) Interliner ONLY (More Than 75% Natural Fibres)
FR17	Meets Cigarette Test BS5852 (0) Interliner ONLY (More Than 75% Natural Fibres) Treatable to BS5867 Part 2 Type B Contract Drapes
FR18	Meets Cigarette Test BS5852 (0) Interliner allowed (More Than 75% Natural Fibres) Treatable to BS5852 (1) Match Test
FR19	Meets Cigarette Test BS5852 (0) Interliner allowed (More Than 75% Natural Fibres) Treatable to BS5852 (1) Match Test and BS5867 Part 2 Type B Contract Drapes
FR20	Meets Cigarette Test BS5852 (0) Interliner allowed (More Than 75% Natural Fibres) Treatable to BS5852 (1) Match Test BS5852 (5) Crib 5 Contract Uph and BS5867 Part 2 Type B Contract Drapes
FR21	Meets Cigarette Test BS5852 (0) (More Than 75% Natural Fibres) Must be Treated to BS5852 (1) Match Test ( Not Suitable for use with Interliner)
FR22	Meets Cigarette Test BS5852 (0) (More Than 75% Natural Fibres) Must be Treated to BS5852 (1) Match Test and BS5867 Part 2 Type B Contract Drapes
FR23	Meets Cigarette Test BS5852 (0) (More Than 75% Natural Fibres) Must be treated to BS5852 (1) Match Test BS5852 (5) Crib 5 Contract Uph and BS5867 Part 2 Type B Contract Drapes
FR24	Meets BS5867 Part 2 Type C (Contract Drapes)
FR25	Does not meet any FR Standards and is not treatable
FR26	Meets Cigarette Test BS5852 (0) Interliner allowed (More Than 75% Natural Fibres) Treatable to BS5852 (1) Match Test & BS5852 (5) Crib 5 Contract Uph
FR27	Treatable to BS5867 Part 2 Type B
FR28	Meets Cigarette and Match Test BS5852 (0) (1) Treatable to BS5852 Contract Uph Crib 5 (BS7176)
FR29	Meets BS5852 Contract Uph Only Crib 5 (BS7176) and BS5767 Part 2 Type C
FR30	Meets Cigarette Test BS5852 (0) Less Than 75% Natural Fibres) Treatable to BS5852 (1) Match Test & BS5852 (5) Crib 5 Contract Uph
FR31	Meets BS5867 Part 2 Type B (Contract Drapes) Treatable to BS5852 Contract Uph Crib 5 (BS7176)
FR32	Meets Cigarette Test BS5852 (0) Interliner ONLY Treatable BS5852 Contract Uph Crib 5 (BS7176) & BS5867 Part 2 Type B Contract Drapes
FR33	Meets BS5867 Part 2 Type B & C
FR34	Meets BS5867 Part 2 Type B & C Treatable to BS5852 Contract Upholstery Crib 5 (BS7176)
FR35	Meets Cigarette and Match Test BS5852 (0) (1) & BS5867 Part 2 Type B + C Contract Drapes Treatable to BS5852 Contract Uph Crib 5 (BS7176)
FR36	FR 36 Meets Cigarette Test BS5852(0) (More than 75% Natural Fibres) Not suitable for use with an interliner - must be treated to BS5852(1) Match Test & (5)